

Welcome

Lunch & Learn Series

Using AI at CW: Guidance for Ethical and Value Aligned Practice

***with
Haley Foladare***

March 18th, 2026
12:00 - 1:00 p.m.



WOMEN'S HEALTH
RESEARCH INSTITUTE
AT BC WOMEN'S





Traditional Territory of the Nuxalk Nation

BCCHRI and WHRI are situated on unceded territories ancestrally stewarded by x^wməθkwə́yəm (Musqueam), Skwxwú7mesh (Squamish), Stó:lō and Səlílwətaʔ/Selilwitulh (TsleilWaututh) Nations.



Today's session

Assess risks, apply ethics and bias principles, and use institutional guidance (e.g., PHSA, UBC, REB) to ensure value alignment when using AI tools in our work at CW

About me



Haley Foladare

WHRI Digital Health Research Manager

- Bsc in Cognitive Systems
- Previous role as Digital Health Coordinator at BCCHRI
- Evaluation of Digital and AI tools, capacity building for researchers in digital health

Value Based Work at CW

Values

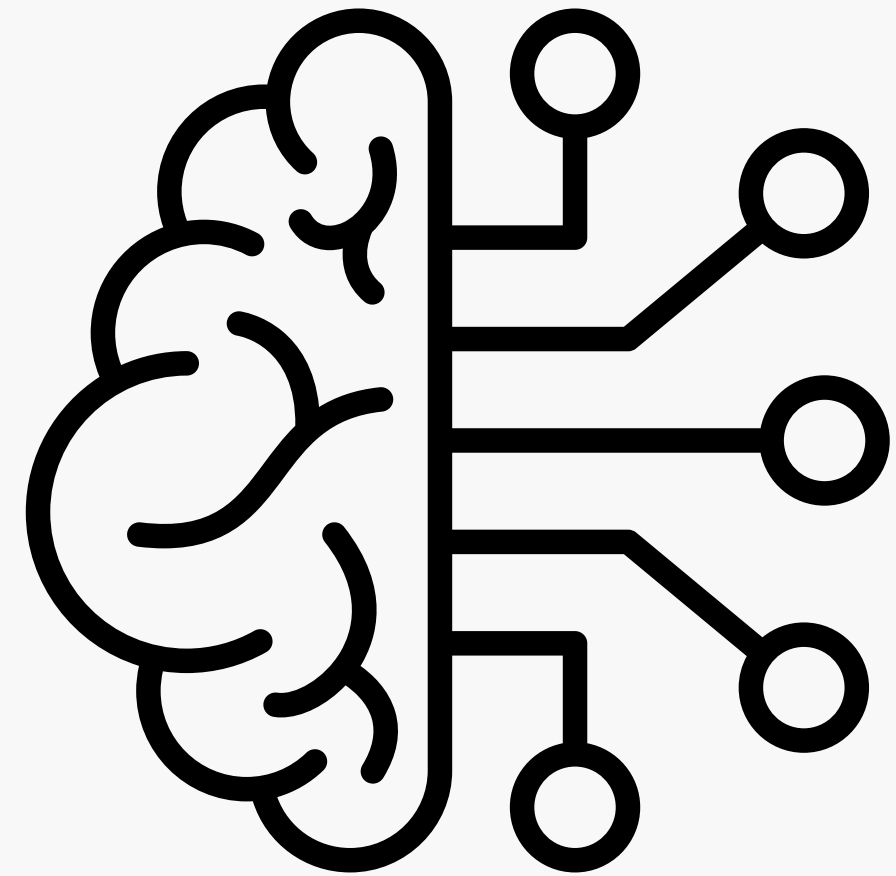
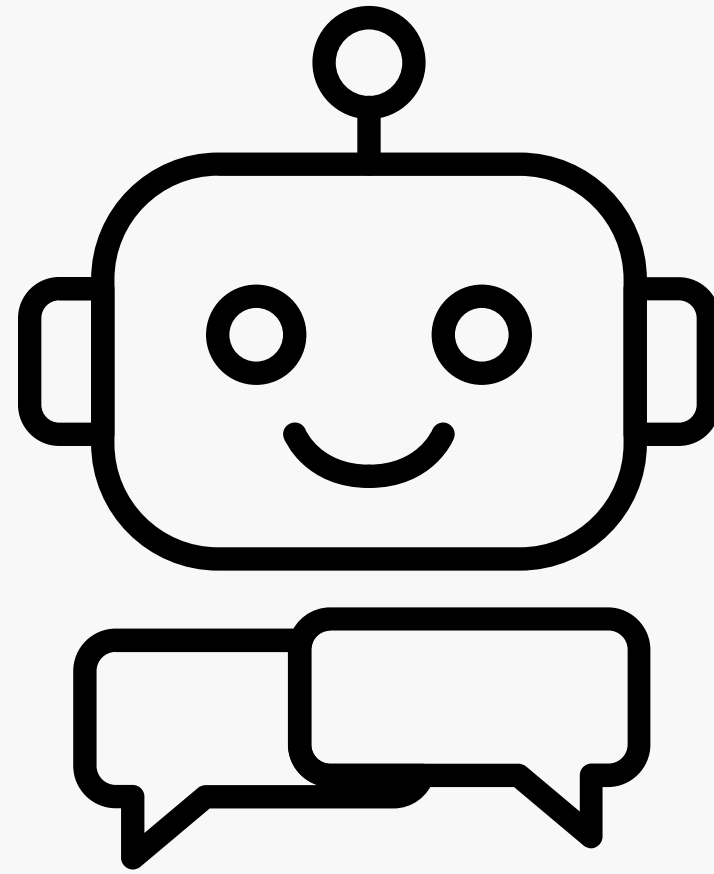
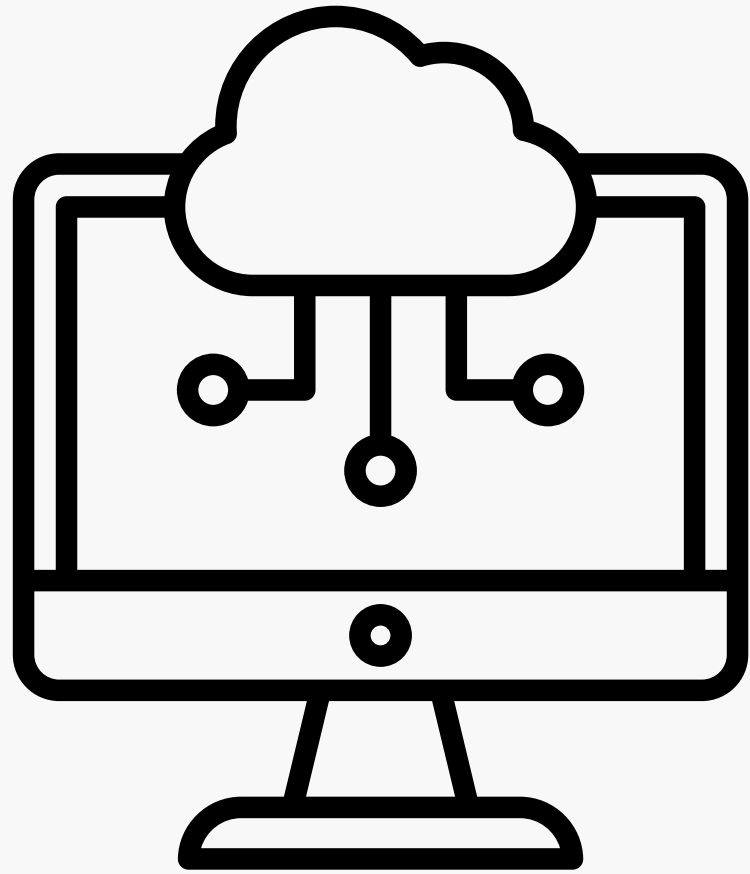
- Equity
- Partnership
- Respect for lived experience
- Reciprocity

Activites

- Patient- oriented research
 - Co-design
 - Community advisory boards
 - Knowlegde Translation
- Activites

Relationships and trust are central to our work

AI is here



We decide how and when to use it

Reflection - Decisions about AI use

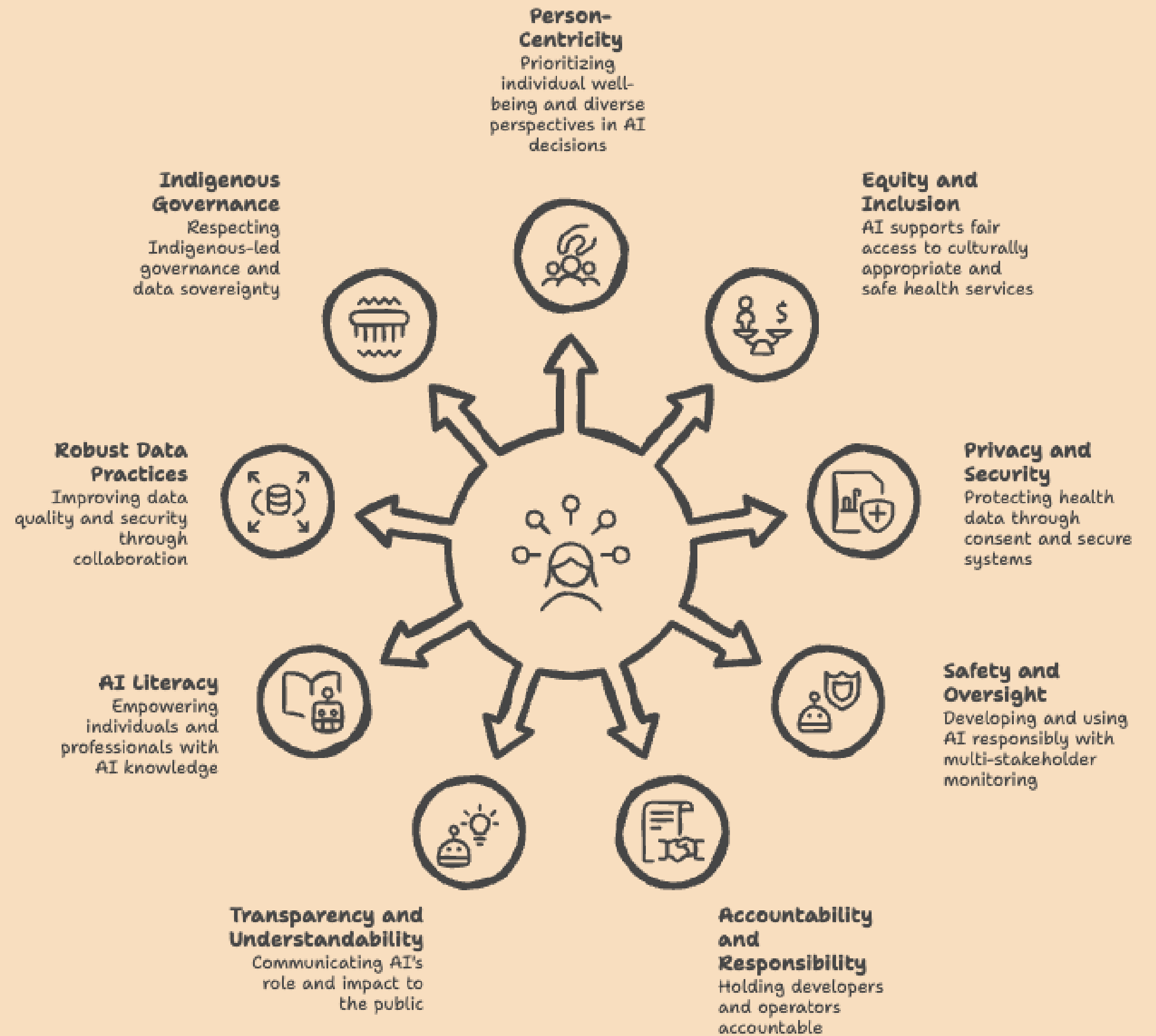


slido.com

5585232

As AI enters the research lifecycle and our daily workflow, how do we ensure its use aligns with the values that guide our work?

Pan-Canadian AI for Health (AI4H) Principles Endorsed by PHSA

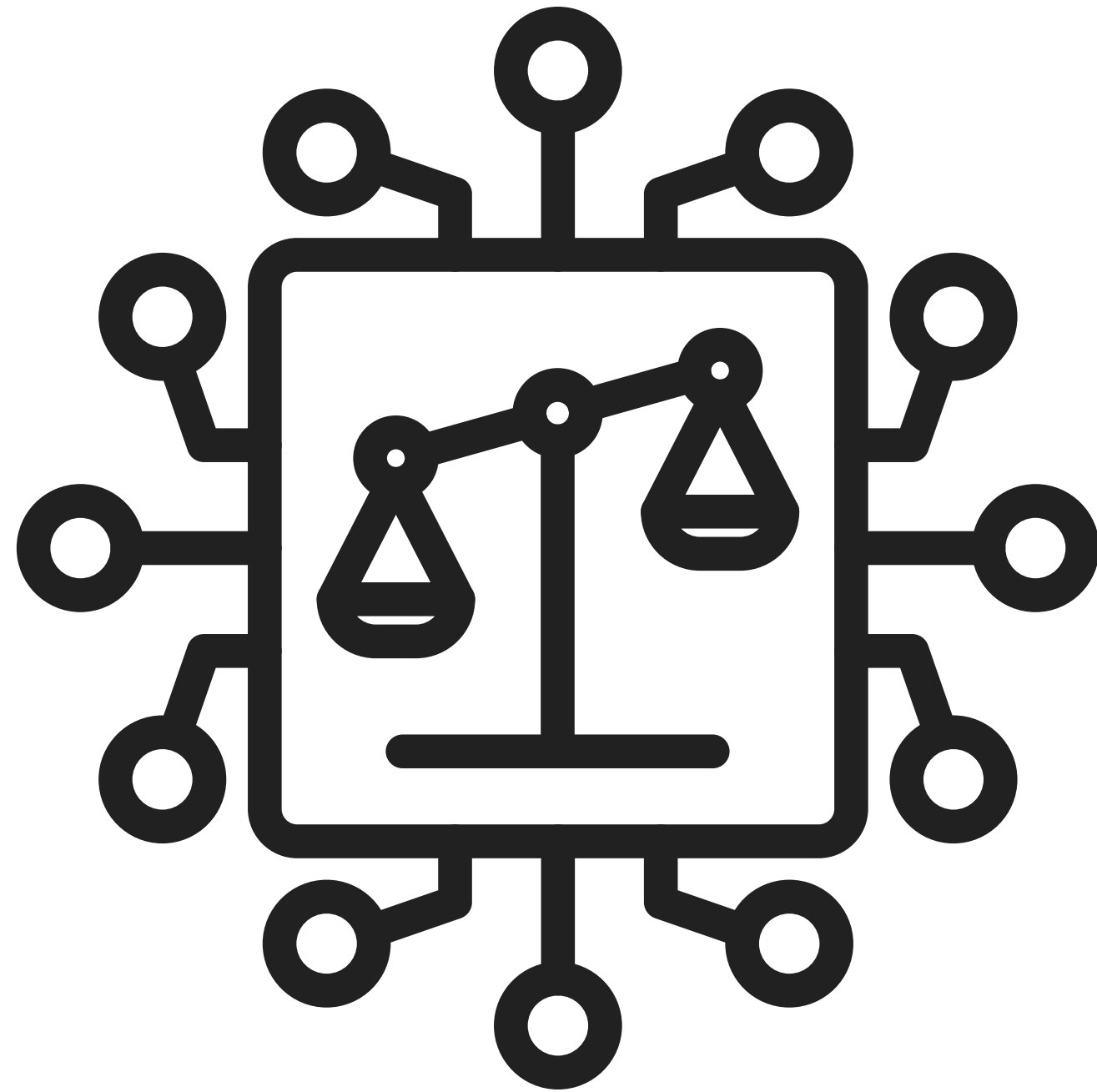


AI4H Principles

Invites us to ask questions such as:

- Who will be affected by this tool, directly and indirectly?
- Are there risks of reinforcing existing health inequities?
- Is participant data protected?
- Do patients or potential end-users have enough information about this tool to give informed consent?





***Algorithms are
Not Neutral***

***Bias in AI systems:
systematic inequitable
treatment of different
groups***

Algorithms are Not Neutral

Example

- Scoping analysis found women presenting with symptoms of a heart attack are more likely than men to be misdiagnosed by diagnostic algorithms
- Due in part to male-dominated datasets, diagnostic algorithms were trained on far fewer examples of heart attacks in women. As a result, the models learned less about how heart attack symptoms can present in women, reducing their ability to accurately recognize and diagnose these cases.
- direct consequences on the care women receive.

Where Bias Can Enter

Empathy Bias

Challenge of incorporating human experience and subjective elements that are difficult to quantify into AI Systems

- Systems may not consider patient preferences, values, or unique circumstances, leading to recommendations that are misaligned with patient needs

Where Bias Can Enter

Environment Bias

Bias resulting from socio-environmental contexts where data is collected and used

- Social determinants of health, rural vs. urban, other environmental variables

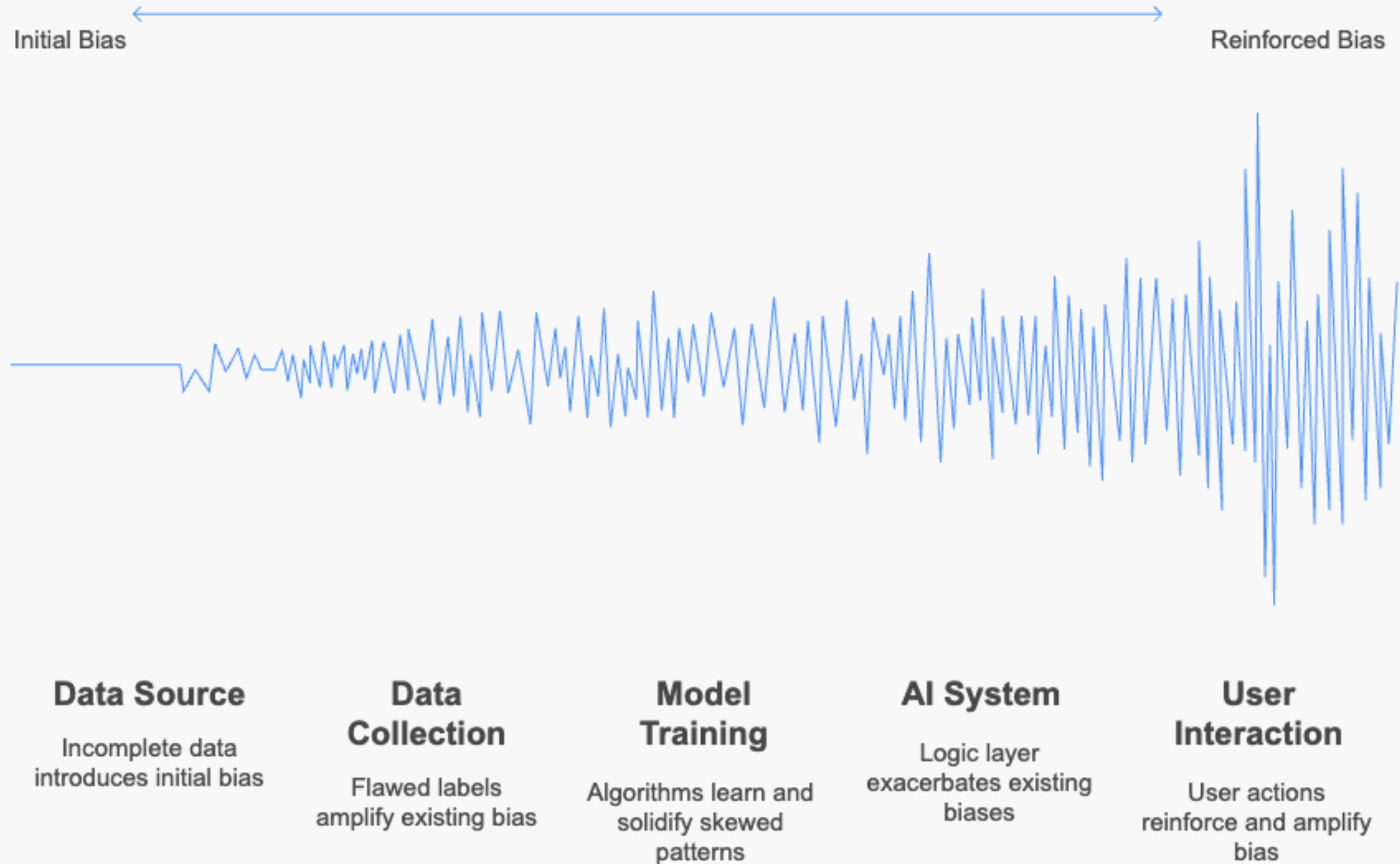
Where Bias Can Enter

Evidence Bias

Processes through which scientific evidence is generated, disseminated, and translated into practice can affect overall reliability and applicability of AI systems

- Funding priorities may not align with the needs of populations
- Bias towards publishing positive results, which skews the evidence bias that AI relies on

Bias emerges and evolves across the pipeline

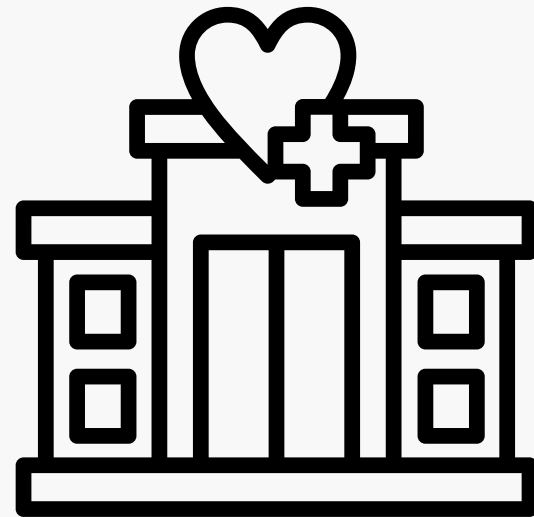


Risks

When AI is integrated into our workflows in ways that do not align with our values:

- Reinforce existing inequities
- Misrepresent lived experiences
- Weaken trust in research process
- Exclude certain groups from receiving benefits of research

AI at CW



Emerging need for guidance from our community

AI Translation at CW

Evaluating the use of AI + a human reviewer to translate research documents

Aim to provide guidance on the appropriate use of AI for translation to ensure that translated materials are ***linguistically accurate, context-appropriate, and reflective of the cultural and gender identities*** of the communities they are intended for.

***AI Guidance
documents within
PHSA and UBC***

What's out there, and when to use it

What is approved?

Copilot is the **only** approved genAI tool for daily work within PHSA

UBC recommends the use of copilot

Make sure you are in your org's copilot tenant (green shield icon).

Other AI tools can be used as part of REB approved research



Copilot



PHSA

PHSA AI Research Toolkit: A resource to support responsible AI research at PHSA

Purpose of the Toolkit

The PHSA AI Research Toolkit aims to support responsible AI research practices across the AI research lifecycle by highlighting available resources, infrastructure and best practices that are accessible to all researchers across PHSA. Responsible AI research entails developing AI systems that consider patients' safety, privacy, and fairness. Ultimately, the goal of this resource is to support research and development of healthcare AI systems that align with the [Pan-Canadian AI4 Health Guiding Principles](#).

Generative Artificial Intelligence Interim Direction and Guidance at PHSA

October 2025

V2.0



AI In research working group

AIWorkingGroup@phsa.ca

PHSA Researcher Guidance: Use of Generative Artificial Intelligence to Complete Research Work

Purpose of this guidance

This guidance is provided to support safe and responsible use of generative AI (genAI) as a tool to enable research work and complete research tasks. There are many potential uses of genAI in medical and health research and these uses may involve both significant risks and benefits. PHSA seeks to promote and encourage the use of innovative tools to support research, and to encourage innovative research, including in the field of AI.



Principles for the use of Gen AI tools

UBC GUIDANCE

Generative AI is a powerful technology that has the potential to transform the way we teach, learn, and work. However, we must carefully consider issues such as data privacy, bias in algorithms, and the potential impact on education. Striking the right balance between AI and human interaction is crucial. The resources below aim to support faculty, staff and students in responsible generative AI use.

PRINCIPLES FOR THE USE OF GENERATIVE AI TOOLS
BACKGROUND AND PURPOSE



TEACHING & LEARNING GUIDELINES

These guidelines, developed with the Generative AI Teaching and Learning Advisory Subcommittee, provide guidance on responsible and ethical use of GenAI in teaching and learning at UBC.



ACADEMIC INTEGRITY GUIDELINES

This list brings together important things to know about ChatGPT and generative artificial intelligence in the classroom for instructors and students at UBC.

Guidelines for the use of GenAI

UBC Library Guide: Researching with GenAi

Library Home / Research Guides / How-to Guides / Generative AI / Using AI in Library Research and Learning

Generative AI

Home

How to Cite

Using AI in Library Research and Learning

Search this Guide

Search

Choosing the right tool: questions to consider

Choosing an AI tool for study or library research involves considering the tool in multiple ways. There are many tools available that are designed for a wide variety of tasks, each having their own strengths and weaknesses. UBC's Centre for Teaching, Learning, and Technology (CTLT) maintains [a list of AI tools](#), and welcomes submissions of relevant tools to be added to the list. Given the broad range of tools available, even for a specific use case, there may exist several tools to choose from.

CW REB

AI Research Ethics Application Checklist

- Submitted alongside your REB application when using or building AI as part of your work
- Questions are aligned with ethical principles and bias mitigation strategies, to help both you and the REB ensure that your AI usage is value aligned

    <p>University of British Columbia – Children's & Women's Research Ethics Board</p>	<p>UBC C&W Research Ethics Board Room A2-141A 950 West 28th Avenue Vancouver, B.C. V5Z 4H4 Tel: (604) 875-3103 Email: cwreb@bcchr.ubc.ca Website: www.phsa.ca/researchethics RISe: https://rise.ubc.ca</p>
--	---

RESEARCH ETHICS ARTIFICIAL INTELLIGENCE / MACHINE LEARNING APPLICATION SUBMISSION CHECKLIST

This checklist highlights key items in evaluating the ethical acceptability and privacy-related information of a research application that involves the use and/or development of AI/ML algorithms.

How to use this checklist:

1. Address each topic as applicable to your specific application using the space provided after each bullet point
 - For categories that do not apply, please indicate this with "N/A" and a brief explanation.
2. If you have multiple aims that propose multiple algorithms, address each point for each algorithm separately and use labelling (i.e., a, b, c) for clarity throughout the checklist.
3. Attach the completed form to Section 9.8 of the RISe Application.

****Please note: The REB may send the application to the PHSA AI working group for review, prior to REB review.**

Use of new tools

Questions about specific tools and use cases?

PHSA staff for daily work:

- PHSA Digital Health Innovation at digitalhealthinnovation@phsa.ca

Researchers and supporting staff for research related questions:

- AI in Research Working Group at AIWorkingGroup@phsa.ca
- CW REB at cwreb@bcchr.ubc.ca

Reach out to me at haleyfoladare@cw.bc.ca



Call to action

- Use resources to guide you in thinking critically about AI usage and development
- Engage with AI as part of a community of thoughtful users. Share questions, raise concerns, and learn from each other so that our use of AI at CW remains responsible, intentional, and aligned with our values.

Slido



slido.com

5585232

***Thank
you***

Questions?

***Lunch & Learn
Series***



**WOMEN'S HEALTH
RESEARCH INSTITUTE
AT BC WOMEN'S**



Thank you



Haley Foladare

(she/her)

haley.foladare@cw.bc.ca

Al Hamid, Abdullah et al. “Gender Bias in Diagnosis, Prevention, and Treatment of Cardiovascular Diseases: A Systematic Review.” *Cureus* vol. 16,2 e54264. 15 Feb. 2024, doi:10.7759/cureus.54264

Dankwa-Mullan, I. Health Equity and Ethical Considerations in Using Artificial Intelligence in Public Health and Medicine. *Prev Chronic Dis.* 2024 Aug 22; 21:E64. doi:10.5888/pcd21.240245. PMID: 39173183; PMCID: PMC11364282

WOMEN'S HEALTH
RESEARCH INSTITUTE
AT BC WOMEN'S

